

A landscape photograph showing a vast green field in the foreground, a line of trees in the middle ground, and a bright blue sky with scattered white clouds. The text is overlaid on the image.

SEEING THE WORLD

IN A  
WHOLE  
NEW LIGHT

---

# MASTERING A RICH TRADITION

WITH ITS ORIGINS ROOTED IN THE CENTURIES-OLD

art of stained glass, clear leaded glass windows

were popularized by Frank Lloyd Wright to carry out

the linear designs of his Prairie School windows.

Simple, yet stunning, his artful windows unified interior

spaces with nature.

Since 1991, Masterpiece Leaded Windows has perfected

the art while preserving the integrity by using genuine

lead, premium glass and custom construction methods.

A home or a model featuring leaded glass windows

not only creates curb appeal, but also an aura of refined

elegance and taste. Leaded glass can be used wherever

you want to make a dramatic statement — in fixed and

sliding windows of every size and shape, sliding and

interior doors, and cabinets.





# GLASS FOR EVERY LOCATION

ALL OF OUR LEADED GLASS WINDOWS

can be manufactured with six choices of

background glass. CHORD and VINE GLASS,

often used in bathrooms, affords maximum

privacy, while still allowing natural light to

filter into the room. GLUE CHIP offers opacity

with a frost-like texture and appearance.

WATERGLASS® gives privacy while permitting

light to pass through. SMOKED WATERGLASS®

offers the same privacy with protection

from harsh sunlight. Clear glass is excellent

in areas where the view is significant.

Masterpiece offers more than 200 window

models with up to six design choices per

window.



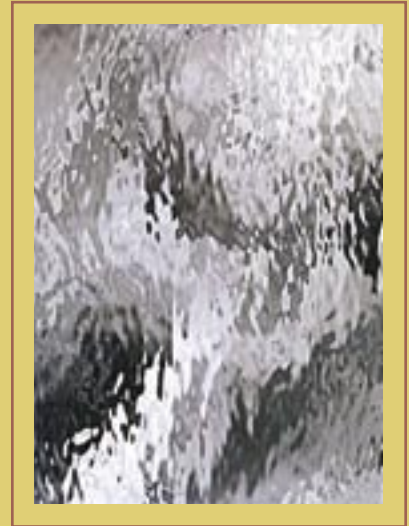
CHORD



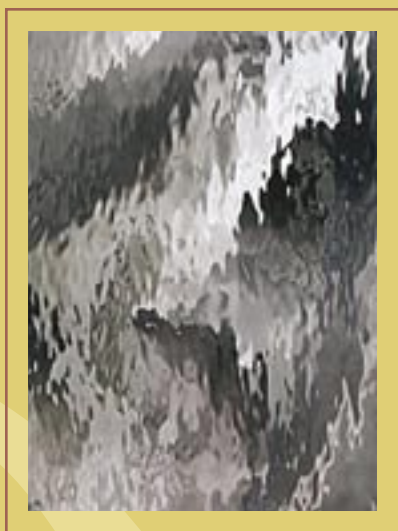
VINE



GLUE CHIP



WATERGLASS



SMOKED WATERGLASS

# ENHANCING YOUR VIEWS











# ARTISTRY IN A STATE-OF-THE-ART FACILITY

EACH DAY IN OUR POWAY, CALIFORNIA, PLANT,

a group of leaded glass craftsmen apply their unique skills to produce the highest quality leaded glass windows in the market. The construction of leaded glass windows has always been a time-consuming process. By utilizing the latest advances in chemistry and assembly technologies, Masterpiece has the capability of fabricating an average of 1,000 windows per day with flawless precision. Lead lines are 5/32" and absolutely symmetrical. You will never see unsightly tape overlays or blurry fill-ins in a Masterpiece window. Where most leaded glass facilities require a three month turnaround, we are able to deliver in a mere three weeks or less — at a lesser cost.



*Energy-Tech Triple Pane  
Leaded Glass Window*

Our facility features state-of-the-art Billco machinery- a precision heat press that fuses the leaded glass window between two panes of glass, CNC countour glass cutting machines, a digitizing table and optimization software system. All are designed for any size of glass fabrication.

In addition, Masterpiece is the only facility on the West coast capable of tempering glass pieces as small as 1 ½" x 1 ½", and to temper glass from 1/8" up to 1" thickness.

Our superior EFCO furnace produces perfectly tempered pieces without the marring that is typical of most tempering facilities.

Energy-Tech® triple-pane leaded windows are available for every window location. They keep interiors cooler in summer and reduce heat loss in winter. Lower U-values ensure higher performance and reduced heating and cooling costs.



# PROFIT FROM OUR TURNKEY OPTIONS PROGRAM

LEADED GLASS WINDOWS ARE THE FIRST OPTION

your buyers see as they tour the models. Although they look expensive, Masterpiece leaded glass windows are one of the most cost-efficient, value-enhancing options buyers can select. We make it super-easy for them to order and for you to profit from every window ordered.

First of all, we measure every window on site because of natural variances to guarantee absolute precision and perfect fit. Our Options form is easy for customers to fill out. Once the windows are fabricated, we perform the installation. You and your buyers have the peace of mind of a warranty that ensures all single-pane windows to be free of defects for ten years, and all Energy-Tech® triple-pane windows for fifteen years. In the rare event a repair is needed, Masterpiece will promptly repair or replace the window.

# JOIN THE RANKS OF SATISFIED BUILDERS

OUR HASSLE-FREE, NO MIDDLEMAN OPTIONS PROGRAM

has made Masterpiece Leaded Glass Windows the first choice with prominent builders throughout Southern California, who want to enhance the beauty of their model homes and offer their buyers an opportunity to create drama in their homes.